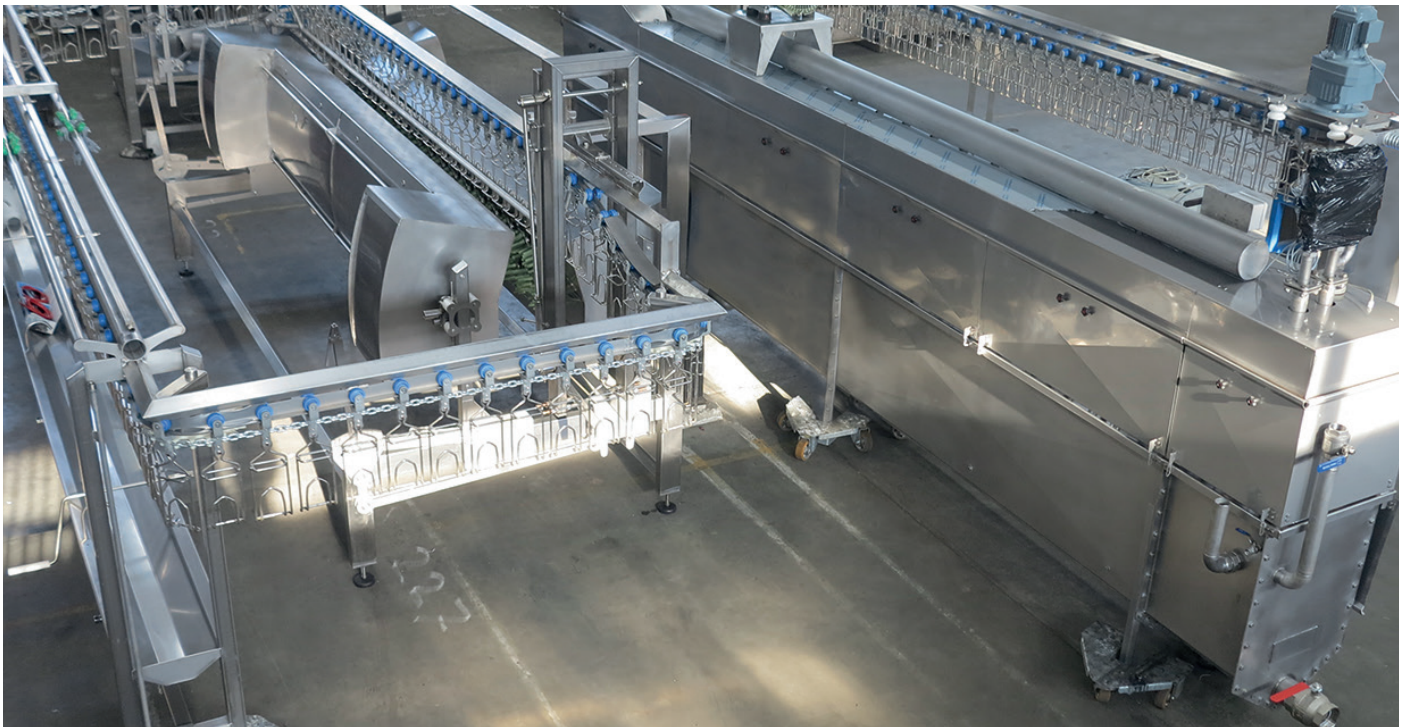


2000 bph compact line



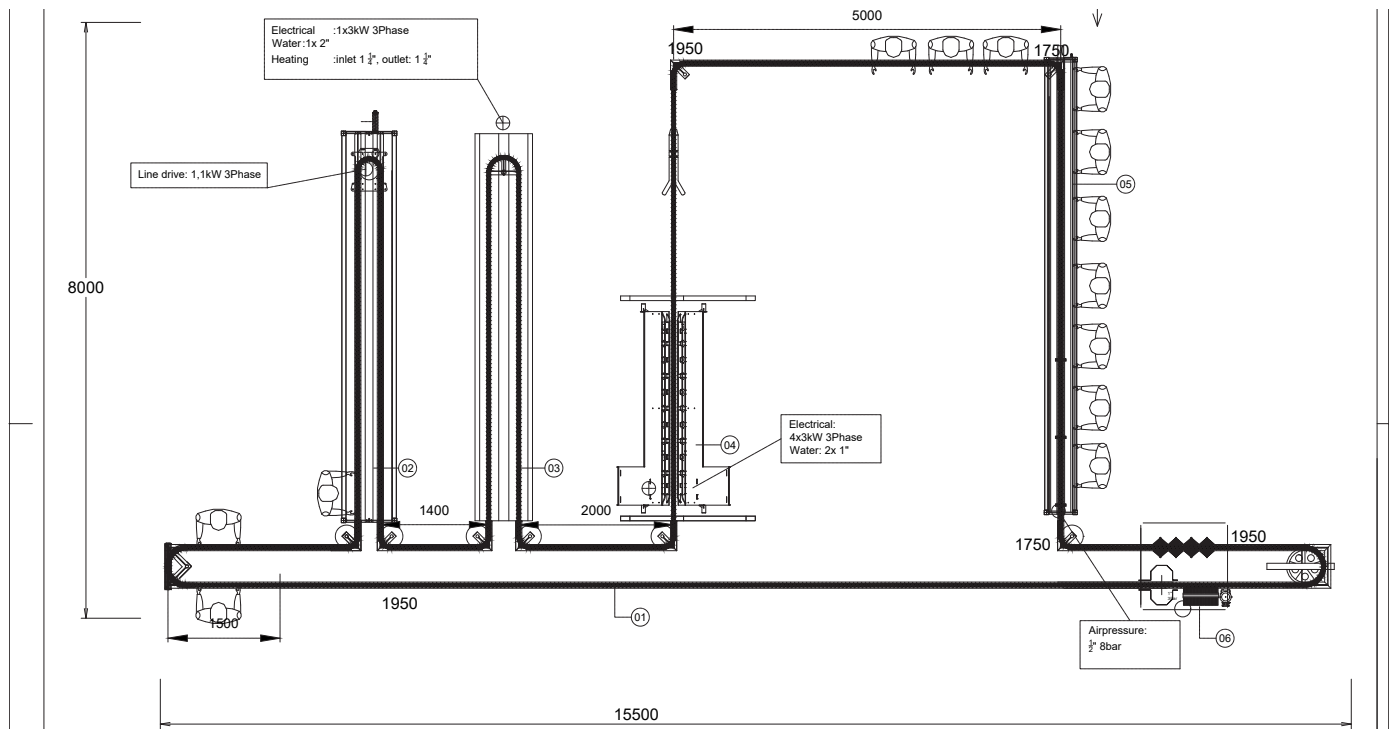
Key Benefits

- Compact, low-cost poultry processing solution to process up to 2000 birds per hour
- Complete set-up which includes all equipment necessary for primary processing
- All equipment is simple and quick to install, operate and maintain
- Designed for future expansion and growth
- Proven technology based on 30 years of poultry processing experience
- Smart engineering and small overhead provide considerable cost savings
- Low initial investment, low cost of ownership per bird and quick return on investment
- Designed and manufactured in Holland



DUTCH POULTRY TECHNOLOGY B.V.
Hillegom, The Netherlands
www.dutch-poultry-tech.com

This information corresponds to the most recent available information at the time of publication. The construction, composition and execution of the product are subject to future modification, without notice. All given figures are indicative estimates. No rights can be derived from this publication.



Legend

1. Overhead Conveyor
2. Bleeding Trough
3. Scalding
4. Plucking section with integrated head / windpipe puller
5. Evisceration trough with work stations and evisceration tools
6. Outside bird washer, hock cutter, hock unloader, chain and shackle washer



DUTCH POULTRY TECHNOLOGY B.V.

Hillegom, The Netherlands

www.dutch-poultry-tech.com

This information corresponds to the most recent available information at the time of publication. The construction, composition and execution of the product are subject to future modification, without notice. All given figures are indicative estimates. No rights can be derived from this publication.

Process / Equipment list

Description					
Staff	Process	Description	kW	Water	Air
2	Hanging	Manual hanging on overhead conveyor			
1	Crate cleaning	Optional: High pressure washer for cleaning crates			
1	Crate handling	Optional: Roller track for transporting live bird crates			
	Stunning	Optional: Operation according to waterbath principle		0.3 - 0.5 m3/h	
1	Killing	Manual killing with a knife			
	Bleeding	Stainless steel trough, effective bleeding length 10000 mm			
	Scalding	Double pass, 550 mm wide, effective scald length 15000/10000mm (soft/hard scald)	1*3.0 kW	0.5 L/bird	
	Plucking	2 opposing plucking cabinets with a total of 40 plucking discs	4*3.0 kW	0.45-2 m3/h	
	Head Pulling	Device for removing heads, in-line, straight type			
	Evisceration	SS trough, 8000mm work length, integrated vacuum/air connections			
	Hand tool accessories	Sharpening steel, stainless steel safety gloves			
1	Vent Cutting	Vacuum and air operated vent gun, capacity 2000 bph per tool. knife Ø 30 mm			24 L/bird
1	Opening	Opening the vent with manual opener knives			
2	Evisceration	Removing the intestine package with evisceration forks			
2	Heart/Liver	Removing / separating hearts and livers from intestine package			
2	Gizzard/Intestine Handling	Removing / handling the remaining intestine package			
		Optional: Gizzard Inspection Table with peeling roll	2*0.55 kW	0.6 m3/h	
2	Neck Cutting	Pneumatic neck scissor, capacity 1000 bph per tool			24 L/bird
2	Lung Removal	Vacuum-operated tool, capacity 1000 bph per tool, pipe Ø 25 mm			
	Bird Washing	Automatic outside bird washer		0.25-0.5 m3/h	
	Hock Cutting	Automatic in-line hock cutter, driven by the overhead conveyor	1*1.1kW		
	Unloading	Automatic unloading station for unloading whole birds or hocks			
	Shackle washing	Chain and shackle washer with rotating brushes and spray nozzles	2*0.4 kW	0.3 m3/h	
	Chilling	Water chiller, 6000 mm long, Ø 1600 mm	1*1.75 kW	2000 liters + 2.5 L/bird	
		Optional: water separator to remove excess water from carcasses	1*0.75 kW		
		Optional: perforated drain table			
2	Packing	Optional device to bag whole birds, capacity 500-800 bph per bagger			10 L/bird
Additional equipment					
	Overhead Conveyor	Stainless steel T-Track, 6 inch pitch, 63 meters long			
	Line Drive /Tensioner	Combined line drive / tension unit	1*2.2 kW		
	Shackles	416 stainless steel defeathering and evisceration shackles			
	Chain	Hardened, calibrated, galvanized steel chain, 25,4x8mm			
	Compressor	Optional: air compressor with a capacity of 900 liters per minute			
	Vacuum	Optional: vacuum transport system with vacuum pump, 1 buffer and 1 collection tank			